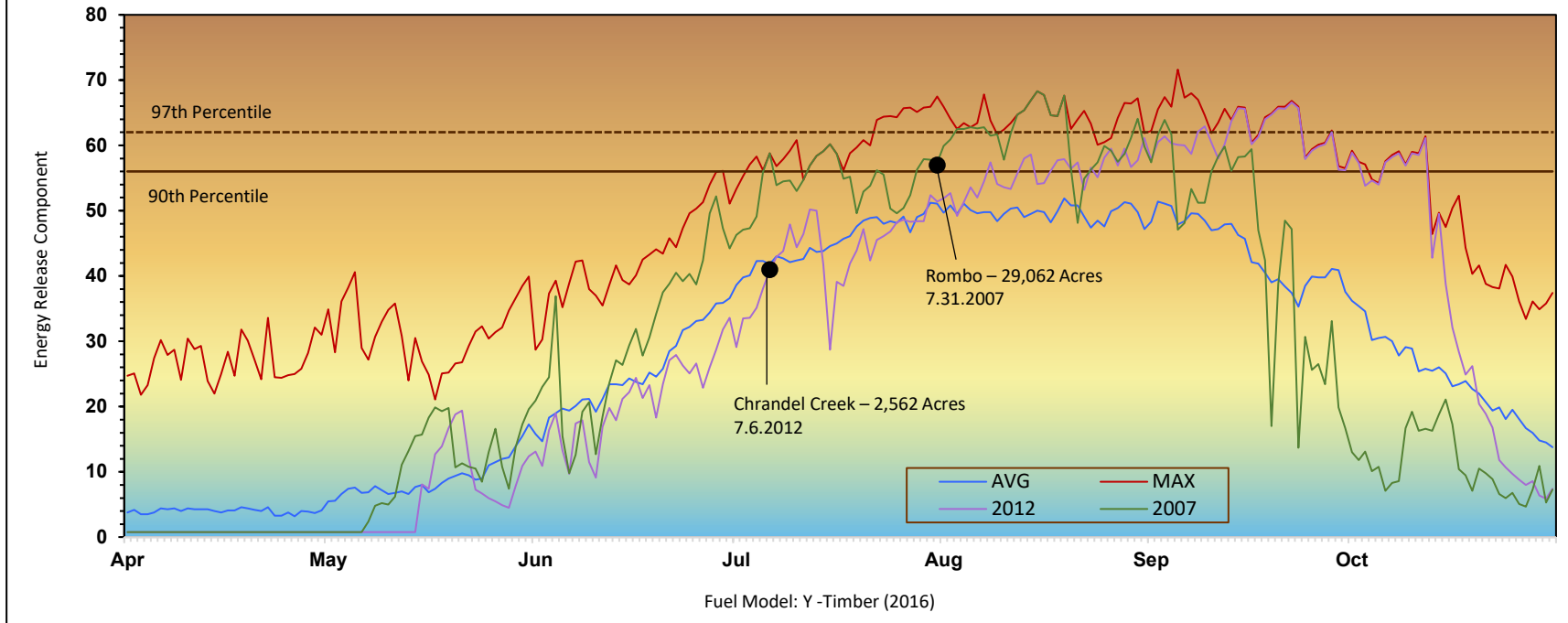


## Bitterroot NF - HIGH Elevation



**FIRE DANGER AREAS:** High Elevation (>6000')

**FORECAST ZONE:** 109 Bitterroot NF

**HIGH Elevation RAWs**

- 101019 Hells Half Acre
- 242902 Deer Mountain
- 242910 Tepee Point
- 242911 Gird

*Stations meet NWCG Weather Station Standards*



Daily Indices

**GRAPH INTERPRETATION:** Energy Release Component (ERC)

**EXTREME** – Use Extreme Caution

**HIGH** – Watch for Change

**MODERATE** – Lower Potential, but always be aware.

**AVG** – Shows peak fire season over 15 years.

BRF Daily Indices

**MAX** – Highest ERC by day for 2003-2017.

**90<sup>th</sup> Percentile** – 10% of 3201 days from 2003-2017 had an ERC above 56.

**97<sup>th</sup> Percentile** – 3% of 3201 days from 2003-2017 had an ERC above 62.

**LOCAL THRESHOLDS – WATCHOUT:**

Combinations of any of these factors can greatly increase fire behavior:

- 20' Wind Speed over 15 mph, RH less than 18%,
- Temperature over 85, 1000-Hour Fuel Moisture less than 12.

**PAST EXPERIENCE:**

For both FDRA's fires normally driven by W/SW winds, influenced by slopes. RH <18% with no wind causes active fire behavior with short-range spotting. Dry cold fronts are common in September with strong winds (50mph) & low RH (20%). In Mountain Pine Beetle infested areas, especially with green-attached trees, expect rapid transition to crown fire and spotting. The year 2007 set 10-year highs for ERC from mid-June through August. The year 2012 had ERC's above the 90<sup>th</sup> percentile from early July – early October and the most acres burned since 2000.

